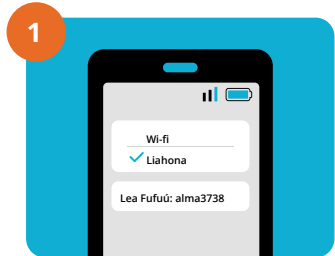
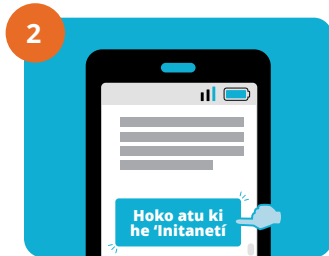


Ngaahi fakahinohino ki he ListenWIFI

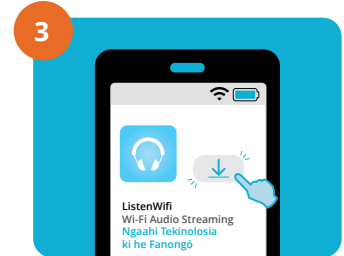
ʻI he polokalama ListenWIFI, ʻe lava ke ke maʻu ai ha tokoni ki hoʻo fanongó pe fakatonulea ʻo fakafou ʻi hoʻo telefoni smartphone fakatāutahá ʻi he netiueka wireless ʻa e falelotú. ʻOku poupuuʻi atu ʻa hono ngāue ʻaki e hetifouni uaeá, ka te ke lava foki ʻo ngāue ʻaki e fanga kiʻi naunau ki he fanongó hangē ko e meʻa ngāue Bluetooth ʻoku tui ki he telingá (earbuds), tui takai ʻi he kiá (neck loops), meʻa fanongo ki he tulí ʻoku tui ʻi he tuʻa telingá (cochlear implants), pe naunau tokoni ki he fanongó (hearing aids).



Fakafehokotaki ki he Wi- Fi. Ko e hingoa ʻo e netiueká ko e **Liahona**. Ko e lea fufuú ko e **alma3738**.



Tohoʻi ki lalo ʻi he screen pea lomíʻi ʻi he **Continue to the Internet**.



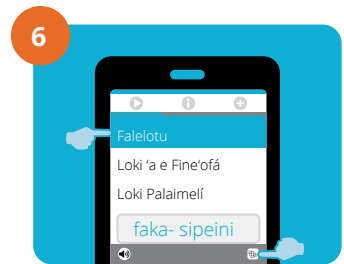
Download ʻa e polokalama **ListenWIFI** mei he app store.



Fakaava ʻa e polokalamá pea fakafehokotaki ho meʻangāue ki he fanongó.



Lomíʻi ʻi he **VENUE SCAN** ʻo ka fiemaʻu.



Fili ha loki. Kapau ʻokú ke fiemaʻu ha fakatonulea, fili ha lea fakafonua.

